

PUMPING IS LIFE GH



Motto: Water is Life
Sanitation is Dignity

Who we are

We implement and provide quality water, sanitation and hygiene services that contribute to health and creating wealth to alleviate poverty using the systems approach: services that meet the needs of households in both rural and urban communities. It is inherent in the products and services our WASH projects provide to serve the needs of the bottom of the pyramid group using innovation, technology and market based approaches.



Contact Us

Bolga-Tamale Highway opposite the GN Bank
P. O .Box WL 95 Walewale
Phone: +233 (0)372099316 or +233206551785
Email: pumpingislifekh@gmail.com



**BROCHURE OF WATER, SANITATION
AND HYGIENE PROJECTS TO
CONTRIBUTE TO ACHIEVING
SUSTAINABLE DEVELOPMENT GOALS
(SDG) 6 BY 2030**

**PUMPING IS LIFE
GHANA
Non-Governmental Organization**

Table of Contents

Overview of Programs	1
SGD 6 and Pumping is Life GH Experiences	2
Vision and Mission of Pumping is Life GH.....	3
Organizational Chart.....	4
Pumping is Life Ghana Products and Services	5

For details and further engagements you are welcome to contact:

YUSSIF ABDUL-RAHAMAN

EXECUTIVE DIRECTOR OF PUMPING IS LIFE GHANA

Email address: yussif.abdul@gmail.com

Skype: [abduhrahmanyussif](https://www.skype.com/people/abduhrahmanyussif)

Linkedin: www.linkedin.com/in/yussif-abdul-rahaman-a119aa22

Facebook: www.facebook.com/PS.WASH.R/

Mobile Phone: +233549288203

Whatsapp: +233506887890

Our Products & Services

Drilling of tube wells and installation of rope pumps



Geophysics Survey using EM343

We use Geonics EM34-3 for geophysics survey of well sitting and use manual or conventional drilling technologies that are appropriate to the environment to drill tube wells or boreholes.

Rope pumps are installed on the wells after drilling. So far 310 rope pumps are providing water supply services in more than 43 communities in Northern Region.



Manual Drilling

Our manual drilling crew provide low cost drilling services in areas where this technology is appropriate and can result in the drilling of tube wells with adequate yield to meet households and communities potable water needs



Rehabilitated hand dug well

We also rehabilitate hand dug wells to convert them from unimproved to improved potable water supply wells through the provision of well linings, rope pumps and aprons. Where necessary we also provide disinfection of the well water to render harmful pathogens ineffective and less harmful and provide safe drinking water supply at the point of use.

Rain water harvesting systems and Household Water Treatment and Safe storage (HWTS) Products



40,000 liters rain water tank

In communities where drilling is not possible due to lack or inadequate ground water, rain water harvesting systems are provided with a capacity of 40,000 liters storage capacity and fitted with a 1 million liters capacity annual artificial aquifer recharge system.

Where drinking water sources are contaminated with microbes such as E. coli we promote the sale and usage of point of use household water treatment and safe storage products such as tulip filters. So far 296 households have been reached.

Household latrines and hand washing facilities



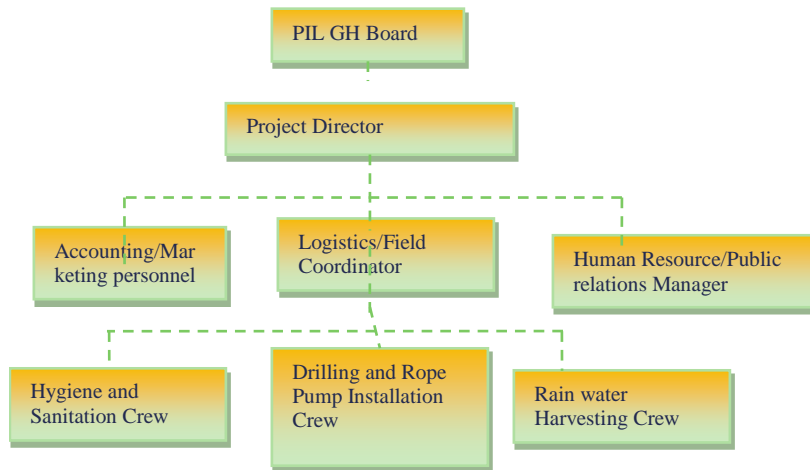
two-seater household latrine

To compliment the potable water supply services in households, we facilitate the construction of twin-sitter latrines and handwashing facilities to prevent open defecation and hand contamination respectfully.



household handwashing system

PUMPING IS LIFE GH ORGANIZATIONAL CHART



We practice the best human resource management through continuous improvement in organizational culture and capacity building of our human resource to be effective and efficient

Organizations that Pumping is Life GH has worked for

1. Aqua for All, The Netherlands
2. Basic Water Needs, The Netherlands
3. FloorGhana, The Netherlands
4. CordAid, The Netherlands
5. The Rotary Foundation of Rotary International in co-operation with The Rotary clubs of Bennekom and Oosterbeek-Kabeljauw, The Netherlands
6. Kerk in Aktie, The Netherlands
7. Impulsis, The Netherlands
8. Wilde Ganzen, The Netherlands

Overview of Programs

Program 1 WASH PROJECTS BASED ON APPROPRIATE TECHNOLOGY



Manual Drilling Crew



Rope pump for a community

Sustainability plays a key role in the design of Pumping is Life Ghana programmes. As a result all our WASH projects are based on appropriate technologies which are easy to operate and maintain within the local WASH services supply chain. These projects include:

1. Household potable water supply using rope pumps, rain water harvesting systems and household water treatment and safe storage (HWTS) point of use products. We also rehabilitate hand dug wells with the aim of converting them from unimproved to improved water supply sources.

2. Household toilets and
3. Household handwashing

Program targets households and institutions such as schools, and health centers in rural and urban communities

Program 2 WASH i-MAINTENANCE CENTERS



i-Maintenance Center Staff

The gap identified in the sustainable WASH service delivery is the lack of spare parts and repair services for both preventive and on the spot maintenance of WASH facilities. To fill this gap Pumping is Life GH implemented and is running 4 maintenance centers designated as i-MAINTENANCE CENTERS. These centers use innovation to provide preventive maintenance and on the spot maintenance that requires spare parts and repair services. This has contributed significantly to 95% rope pump functionality rate where these services are provided.

Program 3 SMALL SCALE HOUSEHOLD MANAGED IRRIGATION



Rope pump water supply system for irrigation

The availability of water creates additional opportunities for households which are willing to use water to grow crops and rear animals to improve on their health through food security and create wealth to alleviate poverty. Pumping is Life GH has such facilitation programs designed to transfer drip irrigation and other technologies to households to enable them engage in income and employment generating activities.

SUSTAINABLE DEVELOPMENT GOAL 6

SDG 6 Clean water and Sanitation

SDG 6.1 Water

For a **safely managed** drinking water service, people must use an improved source meeting three criteria:

- It should be accessible on premises,
- Water should be available when needed, and
- The water supplied should be free from contamination.

SDG 6.2.1 Sanitation

For **safely managed** sanitation services, people should use improved sanitation facilities, which are not shared with other households, and the excreta produced should either be:

- Treated and disposed in situ,
- Stored temporarily and then emptied and transported to treatment off-site, or
- Transported through a sewer with wastewater and then treated off-site.

SDG 6.2.2 Hygiene

The presence of a handwashing facility with soap and water on premises has been identified as the priority indicator for global monitoring of hygiene. Households that have a handwashing facility with soap and water available on premises will meet the criteria for a **basic** hygiene facility.

Pumping is Life GH practices what it preaches as we work towards contributing to the achievement of SDG 6: Accountability and Sustainability in executing projects from design to completion

EXPERIENCES AND ACHIEVEMENTS THUS FAR IN THE WATER, SANITATION AND HYGIENE SECTOR IN GHANA

Program	Quantity of Facilities	Number of people benefiting
Rope pump/Tube wells water supply	310	46,500
Hand dug wells rehabilitation projects	55	8,250
Rain water harvesting systems	146	3,650
WASH i-Maintenance centers	4	
Household managed irrigation	2	2,000
Household latrines	145	1,885
Household handwashing	700	9,100
Household water treatment and safe storage	296	3,848
Grand total of beneficiaries		75,233

VISION AND MISSION OF PUMPING IS LIFE GHANA

VISION STATEMENT

To make the organization the most dependable and easily accessible water and sanitation development organization in the rural and urban communities of Northern Ghana

MISSION STATEMENT

To be an established organization in the water and sanitation development sector in Northern Region, satisfy the expectations of rural communities and policy makers, providing sustainable services, through the use of appropriate technology based on the demand responsive approach

STRATEGIC OBJECTIVES

1. The use of participatory methods in responding to the water and sanitation demands of rural communities
2. Innovation in Sustaining the hydrologic cycle by giving back to nature
3. Focusing on our core competence of 'appropriate technology'(manual drilling, RWHS, rope pumps, social marketing of HWTS products) for rural development
4. Recruiting and training the best human resource to carry out Pumping is Life's mandate to assure and ensure quality of our products and services.



Women fetching water



Tulip filters marketing



Heavy Duty drilling rig to complement our manual drilling technologies

Pumping is Life GH is organized with qualified and professional people well motivated to work towards achieving organizational goals and objectives. The organization works with other organizations in partnership in areas that are beyond its capacity.